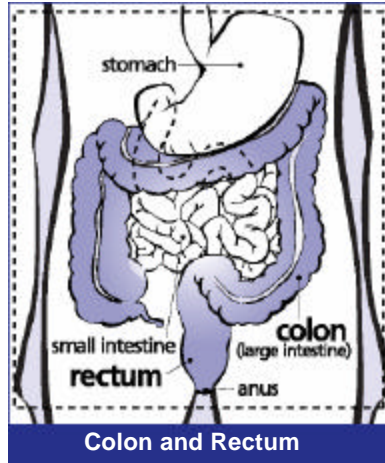


What is Colorectal Cancer?

Colorectal cancer is cancer that occurs in the colon or rectum.

Sometimes it is called colon cancer, for short.

As the drawing shows, the colon is the large intestine or large bowel. The rectum is the passageway that connects the colon to the anus.



It's the Second Leading Cancer Killer

Colorectal cancer is the second leading cancer killer in the United States, but it doesn't have to be. If everybody age 50 or older had regular screening tests, at least one-third of deaths from this cancer could be avoided. So if you are 50 or older, start screening now.

Who Gets Colorectal Cancer?

? Both men and women can get colorectal cancer.

? Colorectal cancer is most often found in people 50 and older.

? The risk for getting colorectal cancer increases with age.

Are You at High Risk?

Your risk for colorectal cancer may be higher than average if:

? You or a close relative have had colorectal polyps or colorectal cancer.

? You have inflammatory bowel disease.

People at high risk for colorectal cancer may need earlier or more frequent tests than other people. Talk to your doctor about when you should begin screening and how often you should be tested.

Screening Saves Lives

If you're 50 or older, getting a screening test for colorectal cancer could save your life. Here's how:

? Colorectal cancer usually starts from polyps in the colon or rectum. A polyp is a growth that shouldn't be there.



? Over time, some polyps can turn into cancer.

? Screening tests can find polyps, so they can be removed *before* they turn into cancer.

? Screening tests can also find colorectal cancer early. When it is found early, the chance of being cured is good.

Colorectal Cancer Can Start With No Symptoms

People who have polyps or colorectal cancer sometimes don't have symptoms, especially at first. This means that someone could have polyps or colorectal cancer and not know it. That is why having a screening test is so important.

What are the Symptoms?

Some people with colorectal polyps or colorectal cancer do have symptoms. They may include:

? Blood in or on your stool (bowel movement).

? Pain, aches, or cramps in your stomach that happen a lot and you don't know why.

? A change in bowel habits, such as having stools that are narrower than usual.

? Losing weight and you don't know why.

If you have any of these symptoms, talk to your doctor. These symptoms may also be caused by something other than cancer. However, the only way to know what is causing them is to see your doctor.

Types of Screening Tests

There are several different screening tests that can be used to find polyps or colorectal cancer. Each one can be used alone.

Sometimes they are used in combination with each other. Talk to your doctor about which test or tests are right for you and how often you should be tested.

? **Fecal Occult Blood Test or Stool Test**

For this test, you receive a test kit from your doctor or health care provider. At home, you put a small piece of stool on a test card. You do this for three bowel movements in a row. Then you return the test cards to the doctor or a lab. The stool samples are checked for blood.

How Often: This test should be done every year.

? **Flexible Sigmoidoscopy**

For this test, the doctor puts a short, thin, flexible, lighted tube into your rectum. The doctor checks for polyps or cancer inside the rectum and lower third of the colon.

How Often: This test should be done every 5 years.

? **Fecal Occult Blood Test Plus Flexible Sigmoidoscopy**

Your doctor may ask you to have both tests. Some experts believe that by using both tests, there is a better chance of finding polyps or colorectal cancer.

? **Colonoscopy**

This test is similar to flexible sigmoidoscopy, except the doctor uses a longer, thin, flexible, lighted tube to check for polyps or cancer inside the rectum and the entire colon. During the test, the doctor can find and remove most polyps and some cancers.

How Often: This test should be done every 10 years.

Colonoscopy may also be used as a follow-up test if anything unusual is found during one of the other screening tests.

? **Double Contrast Barium Enema**

This test is an x-ray of your colon. You are given an enema with a liquid called barium. Then the doctor takes an x-ray. The barium makes it easy for the doctor to see the outline of your colon on the x-ray to check for polyps or other abnormalities.

How Often: This test should be done every 5 years.

Will Insurance or Medicare Pay for Screening Tests?

Many insurance plans and Medicare help pay for colorectal cancer screening tests. Check with your plan to find out which tests are covered for you. To find out about Medicare coverage, call 1-800-MEDICARE (1-800-633-4227).

The Bottom Line

If you're 50 or older, talk with your doctor about getting screened.

For more information, visit www.cdc.gov/screenforlife or call CDC Info at 1-800-CDC-INFO (1-800-232-4636). For TTY, call 1-888-232-6348.

